



A Premier Port of Call of Excellence

Resurgence through innovation



SEA BLUE SHIPYARD LTD

An ISO 9001-2015 Certified Shipyard

INTRODUCTION

Sea Blue Shipyard Ltd (SBSL) is a Kochi based, ISO 9001-2015 certified company with a decade long impressive track record in ship building and ship repair. Managed by a team of professionals with proven expertise and consummate experience including Master Mariners, Marine Engineers and Naval Architects. SBSL has an excellent yard at Vypin, equipped with state-of-the-art infrastructure capable of providing comprehensive solutions in ship building, repairing and other engineering fabrication and maintenance projects. SBSL has a unique distinction of being the only private shipyard in Kochi with competitive infrastructure to match its business capabilities. SBSL, with a view to expand its business activities and to make its presence strongly felt across the nation, has established a branch in Goa in 2009, which is specially equipped to carry out repairs of vessels and offshore assets calling at Goa port.

SBSL is built up in 4 acres of land in Vypin, just opposite to the Vallarpadam international Container Transshipment Terminal and a few meters away from the shipping channel and sea mouth. It is close to Cochin Shipyard Ltd, Cochin Port Trust, SPM and LNG Terminal. All these are situated within a radius of 3 kilometers. Cochin Port is the one and only Port in India located close to the 400 million metric ton cargo carrying international sea route line.



VISION

: To make the SBSL the most respected shipyard in India.

MISSION

: To deliver quality services to our customers through skilled and dedicated human resources in a safe working environment.

OBJECTIVES

: To ensure Quality Control into all our operations to achieve zero defect in all our products and services to the customer.

: To serve as a platform to impart practical training in the field of Marine Engineering and Ship Building with a view to cater the manpower requirements of the industry.

: To uplift the Society in the area through creation of suitable employment.

YARD INFRASTRUCTURE

SBSL is equipped with excellent infrastructure and resources for ship building, ship repairs and general engineering works, which makes it one of the most competent private Shipyards in South India.

SLIPWAYS



SBSL has 06 Nos licensed slipways. One is a mechanical slipway of size 70m x 15m having 4 track rails, capable of hauling up vessels up to 800 Tons Lightship weight. In the other slipways we are hauling up vessels of size 70m x 20m by conventional method using Air bags, Wooden Sleepers, Steel Rollers, Capstan etc.

WHARF



Wharf at SBSL with total length of 200m and draft of 5m to 6m, which offers berthing facilities to Ships up to 120m long, is the next largest berth available in Cochin after Cochin Shipyard Ltd. It is designed to suit the requirement of afloat repairs of medium sized vessels and also provide shelter to vessels during off season.

GANTRY CRANES



SBSL is equipped with 60 T capacity Gantry Crane capable of doing block fabrication. and 14 ton mobile cranes with a reach of 27m. It is also capable of lifting out engines, smaller vessels and RIBs.

TUG BOAT



Towing Capacity : 3 Ton Bollard Pull

M.B Sea Blue, a twin-screw Tug boat, is fitted with a Towing hook of capacity 3 Ton bollard pull and can carry cargo upto 20 Tons for delivery at vessels at outer anchorage or distant island areas.



BALLOON DOCK

This unit Consists of Hydraulically operated three numbers Winch Mechanism, Air Bags, Air compressors and Pulley Brackets system with wire ropes.

SBSL has in-house expertise and infrastructure to carry out Balloon Docking & Launching of vessels up to 1000 tons.

We are having 12 Nos balloons of diameter 1500mm and 15 mtrs long. Each Airbags can carry a load of 100 Tons.

This Balloon dock facility can accommodate three numbers vessels of size 80m x18m, 58m x 15m & 54 x 12m at the same time.

ASSEMBLING & LAUNCHING OF VESSELS

SBSL has unique experience in assembling and delivering Cutter Suction Dredgers which are being imported from foreign countries or made in India



OFFICE SPACE

Air conditioned & fully furnished office space & conference halls, Desktop Computers, LED Projectors, LED TV, office tables, executive chair, visitors sofa, Safe Lockers, dining tables with chair STD land line Fax telephone connection, Internet Facility, EPABX System, Un-interrupted Electrical power supply, Fresh water and drinking water connections including all convenience facilities for ladies and gents. Executive Office space for Ship crews.

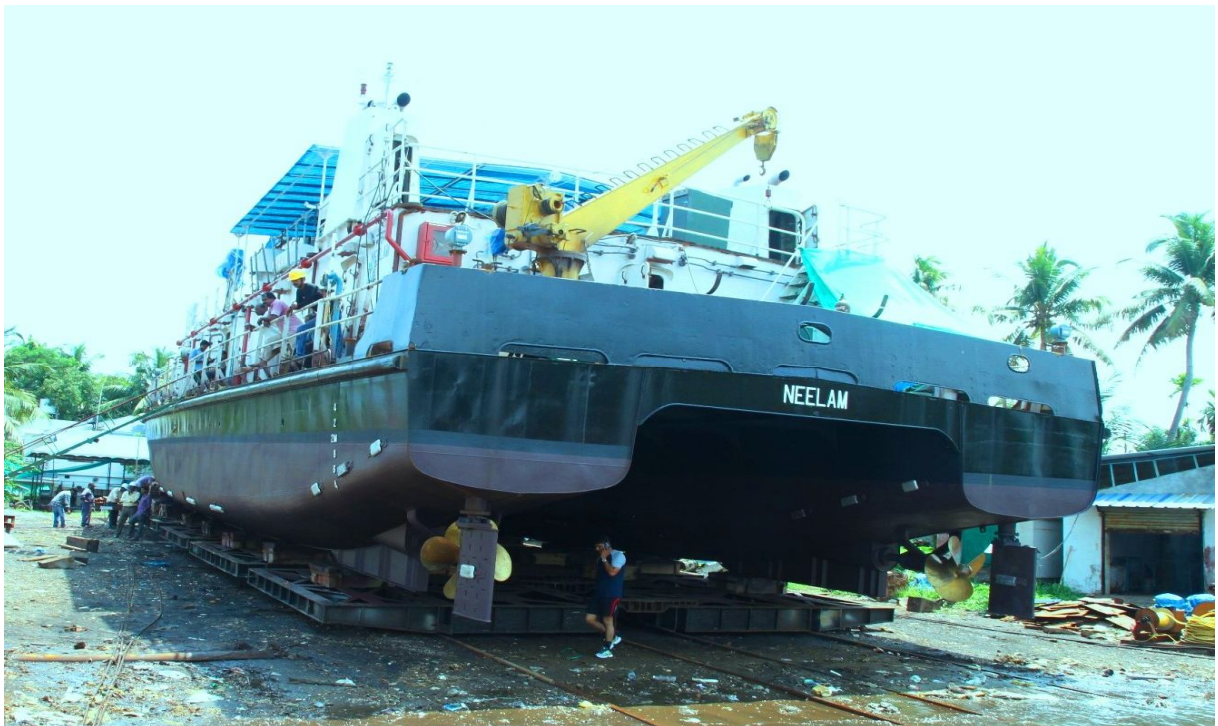


MAJOR SHIP REPAIRS & UPGRADES

NAVAL VESSELS



Normal Refit of **Water Barge PAMBA** of 500 ton and 51 mtr length of **Indian Navy** at SBSL slipway



Short Refit & Allied Repairs of **Ferry Craft Neelam**

NAVAL VESSELS



Water Barge AMBUDA of 500 ton and 51 mtr length after Dry dock Repair (Indian Navvessel)



Short Refit & Allied Repairs of TUG SRP BALSHIL

COAST GUARD VESSELS



Medium refit of *ICGS Savitribai Phule (Fast Patrol vessel)* of 300 T and 50m length of *Indian Coast Guard*



Medium refit of vessel *ICGS Abhinav (Fast Patrol vessel)* of 300 T and 50m length of *Indian Coast Guard*

COAST GUARD VESSELS



Short Refit of vessel **ICGS RAJDOOT** (Fast Patrol Vessel) LOA 50 Meters of **Indian Coast Guard** at SBSL

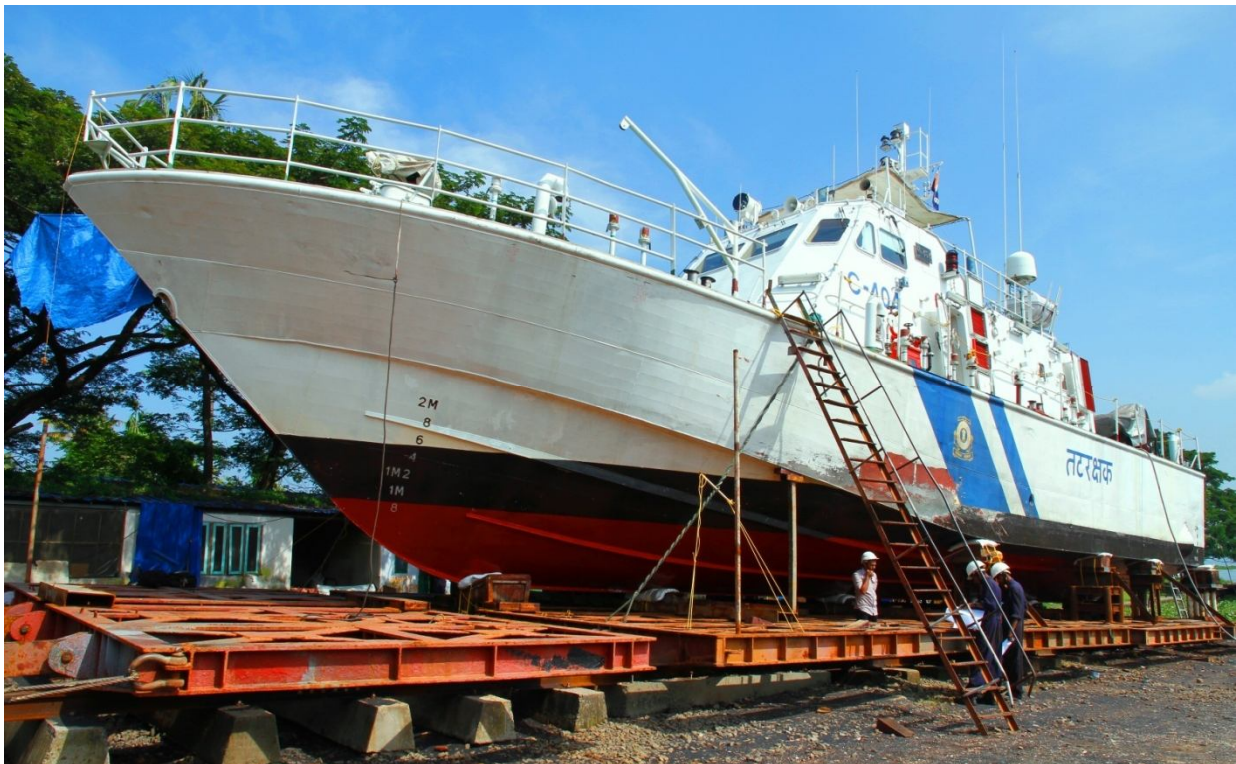


Short refit of vessel **ICGS Amartya** (FPV Class) 50m length of **Indian Coast Guard**

COAST GUARD VESSELS



Refit of ICG vessel of Indian Coast Guard



Refit of ICGS C-404 (IB Class) 28m LOA of Indian Coast Guard



Refit of *ICGS C-144 (IB Class) 28m LOA of Indian Coast Guard*



Refit of *ICGS C-150 (IB Class) 28Meter LOA (Indian Coast Guard)*

CATAMARAN



TRIDENT COCHIN
Docking of Catamaran **MV Vrinda**
at SBSL Slipway for Maintenance

RESEARCH VESSEL



SHIPPING CORPRATION OF INDIA
Docking of Research Vessel
RV Samudra Shaudhi Kama
at SBSL Slipway

DRY CARGO VESSEL



FINESSE SHIPPING PVT LTD
Docking of Dry Cargo Vessel
MV Nuimath - II (54Meter LOA)
at SBSL Slipway

VESSEL CONVERSION



A. B CURSETJEE & SONS LTD

Conversion of 51mtr x 10.55mtrs Ammonia barges to Dumb Hold for A. B Cursetjee & Sons Ltd

CUTTER SUCTION DREDGER



Adani Ports & Special Economic Zone Limited
Haul up of Cutter suction Dredger MUC
Jalashwa IV with Balloons at Sea Blue Shipyard



Laxyo Energy Limited
Haul up of Cutter suction Dredger **CSD Laxyo**
with Balloons at Sea Blue Shipyard

CRANE BARGE



Rock & Reef Dredging Pvt Ltd
Haul up of **Rock III** Barge Balloons at Sea Blue
Shipyard

TUG



Adani Ports & Special Economic Zone Limited
Haul up of **Tug Sagar III** with Balloons at Sea
Blue Shipyard.

NEW CONSTRUCTION

GOVERNMENT OF KERALA

Design, Construction and Delivery of 15.5 Meter Survey Launch "M.V Nirdheshak" for Chief Hydro-Grapher, Gov. of Kerala



GOA SHIPYARD LIMITED

Design, Construction and Delivery of 13.5 Meter Fishing Research Vessel "R.V Cadalmin-I" for Goa Shipyard Ltd.



SPARKLE PORT SERVICES LTD, HYDERABAD LIMITED

Design, Construction and Delivery of 17 Meter Pilot cum Mooring Boat "Ocean Arrow" for Sparkle Port Services Ltd



FERTILIZERS AND CHEMICALS TRAVANCORE

Design, Construction and Delivery of 51.44 Meter Self-Propelled Barge for transportation of Liquid Ammonia Gas for FACT Engineering Works Ltd.



NAVAL PHYSICAL & OCEANOGRAPHIC LABORATORY

Design, Construction & Supply of 25 Meter Ro-Ro Barge "MV Kurathi" for NPOL Kulamavu



ANDAMAN LAKSHADWEEP HARBOUR WORKS

Design, Construction & Delivery of 22 Meter Grab Mounted Barge "GD IMAN" for ALHW Kavarathi



GENERAL ENGINEERING

FABRICATION & ERECTION OF DAMAGE CONTROL TRAINING FACILITY FOR INDIAN NAVY.



Manufacture and supply of Manhole Covers & Wooden Inclined Ladder for the Vessel INS Vikrant(1st Indigenous Air Craft Carrier of Indian Navy)



Port and Stbd Main Engine of ICGS Savitribai Phule of Indian Coast Guard being lifted for 1200hourly Routine(Major overhauling) during Medium Refit at SBSL.

QUALITY, INNOVATION & COLLABORATION

With its prominent locality, 200m wharf, skilled and experienced work force and ship building infrastructure, SBSL is capable of undertaking following activities.

- Design, construction and delivery of vessels up to 60m long.
- Dry dock repairs of vessels up to 120 m in length.
- Afloat repairs to ships calling at Kochi, Goa and other neighboring Ports and repairs to ships and offshore installation up to 120m length in our Wharf.
- Fabrication erection, commissioning including annual maintenance of Damage Control Training Facility for Indian Navy
- Disposal of Slope from ship calling at Kochi.
- Crane facility for handling materials.
- Tug Boat Service at outer anchorage.
- Erection, Commissioning and operation of Ship Lift System.
- Design and fabrication of IRS approved Water Tight Doors, Hatches and Manholes.

CERTIFICATION



QUALITY POLICY:

We at Sea Blue Shipyard Ltd are committed to total customer satisfaction through:-

- Manufacturing / Construction and delivery of high quality vessel that meet our customers specifications and schedules at most affordable prices and to provide prompt and reliable repair/ service activities to our customers
- Developing such products that meet international standards.
- Conformance to industry standards.
- Use of state-of-the-art facility and ensure supply of zero defect products
- Supply of such products that are highly safe for use.
- Continual improvement of our processes and products with total involvement of people at all levels.

CLIENT LIST

		
	 <p>Cochin Port Trust</p>	
		
		
		
		
		

EXPANSION PROGRAMME:

As a first step of the expansion activities, the company is acquiring an additional land area of about 0.74 acres adjacent to the present yard which will provide a total of 4.74 acres of land for its yard facilities. Immediately after the acquisition of the additional land, construction of the dry dock, the dream project of the company can be started. The size of the dock will be 100X20x8M. The projected cost of the construction of the dock is Rs. 3000 Lakhs.



A LOCATION WHERE CONVENIENCES CONVERGE



Sea Blue Shipyards is built up in 4 acres of land in Vypin and few meters away from ship channel and Sea Mouth. The SBSL is located just opposite to the Vallarpadam International Container Transshipment Terminal. It is close to Cochin shipyard Ltd., Cochin Port Trust, SPM , LNG Terminal and International Bunkering Terminal. All these are situated within a radius of 3 Kilometers. Cochin Port is one and only Port in India located close to the 400 million metric ton cargo carrying international sea route line and it is closer than Colombo Port.

Sea Blue Shipyards Ltd.



Registered Office & Yard:-

1/212, VP Road, Azheekal PO, Vypin,
Kochi-682 508, Kerala, India.

Tel:- +91 484 2503636

Fax:- +91 484 2502536

Email:-tech@seablueshipyard.com

Goa Branch

Flat No:- 20, Belmira Plaza, Vaddem,
Vaso Da Gama, Goa-403 802, India.

Tel:- +91 9158 003 021

Email:- goa@seablueshipyard.com